

SOG SERIES

Super Thin Type Tactile Switch

MITSUMI

TACTILE SWITCHES

SLIDE SWITCHES

SWITCH SHEETS

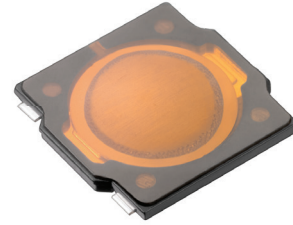
SWITCH KITS

FEATURES

- Original terminal structure reduces the mounting area
- Good feel from the wider pressing range
- High reliability due to dustproof design

APPLICATIONS

- Smartphones
- Digital cameras
- Gaming devices
- Wearables
- Other electronic devices - consumer, medical, commercial



PART NUMBER CODE

Series	Earth Terminal	Fixed Character	Operating Force	Air Vent	Positioning Boss	Packaging
<input type="text" value="SOG"/>	<input type="text" value="1 (without)"/>	<input type="text" value="5"/>	<input type="text" value="2 (1.6N)
4 (2.35N)"/>	<input type="text" value="A"/>	<input type="text" value="N (without)"/>	<input type="text" value="T (taping)"/>

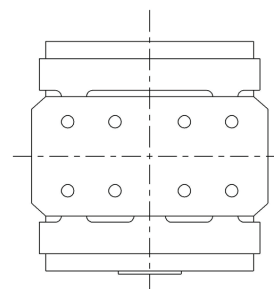
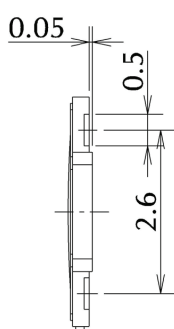
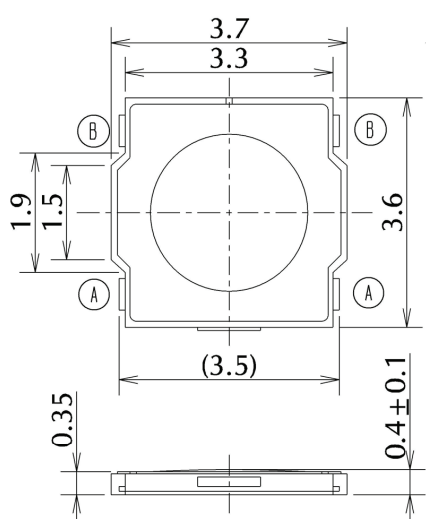
SPECIFICATIONS

Switch Type	SPST	Tactile
Electrical Characteristics	Rating (Resistive Load)	DC15V, 20mA
	Contact Resistance	1Ω or less
	Insulation Resistance	10MΩ or more
	Withstand Voltage	1 minute at AC 100V
Life	SOG-152ANT	1,000,000 times
	SOG-154ANT	500,000 times

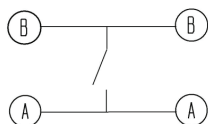
TYPE

Model Name	Model No.	Operating Force	Travel	Boss	Pcs/Reel
SOG-152ANT	R 667834	1.6N	0.15mm	Without	10,000
SOG-154ANT	R 667837	2.35N	0.15mm	Without	10,000

DIMENSIONS

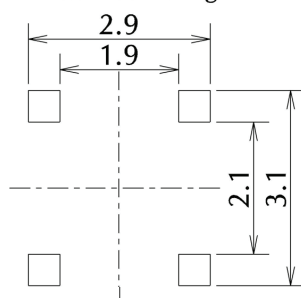


Circuit Diagram

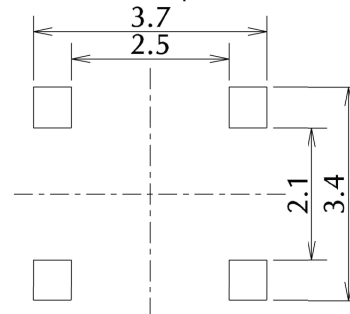


Reference land dimension
The thickness of solder stencil: 100 μ m

Refer-1
Bottom soldering



Refer-2
Normal land pattern



It's possible to minimize the mounting area, but not possible to confirm solder fillet.

It's possible to confirm solder fillet.

